

NDS™ Adaptor(#0609) Manual

1. Function

“NDS™ Adaptor” (#0609) is a transferer for user to back up game savers from NDS™ game cart to PC, or download game savers from PC to NDS™ game cart.


2. Set up procedure

2.1 Connect the NDS™ Adaptor to PC USB port. (see figure 1 below)

2.2 For the first time to use this product, install the driver.

(see the detailed guide “3. Driver Installation” STEP #3.1 - STEP #3.6 below)

2.3 Run the provided NDS™ Adaptor program. (see figure 2 below)

2.4 Connect a NDS™ game cart to the adaptor. The program would detect the game cart, show up the USB logo  and cart volume. (see figure 3 below) The cart volume may different from card to card, may not equal to 512k.

2.5 User could upload or download game savers via the program. (see the detailed guide “4. Transfer Game Savers” below)

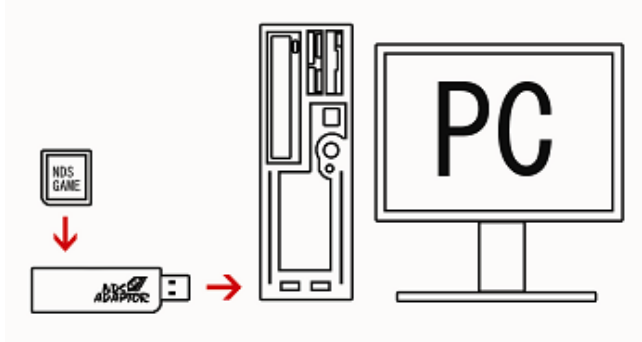


Figure 1



Figure 2



Figure 3

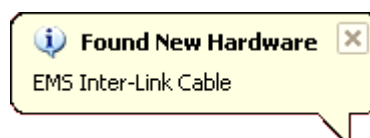
3. Driver Installation

STEP #3.1

Copy all the provided files to PC, and note down the path of the files.

STEP #3.2

For the first time the NDS™ adaptor is connected to the PC, you'll notice the “found new hardware” box appear on your screen.



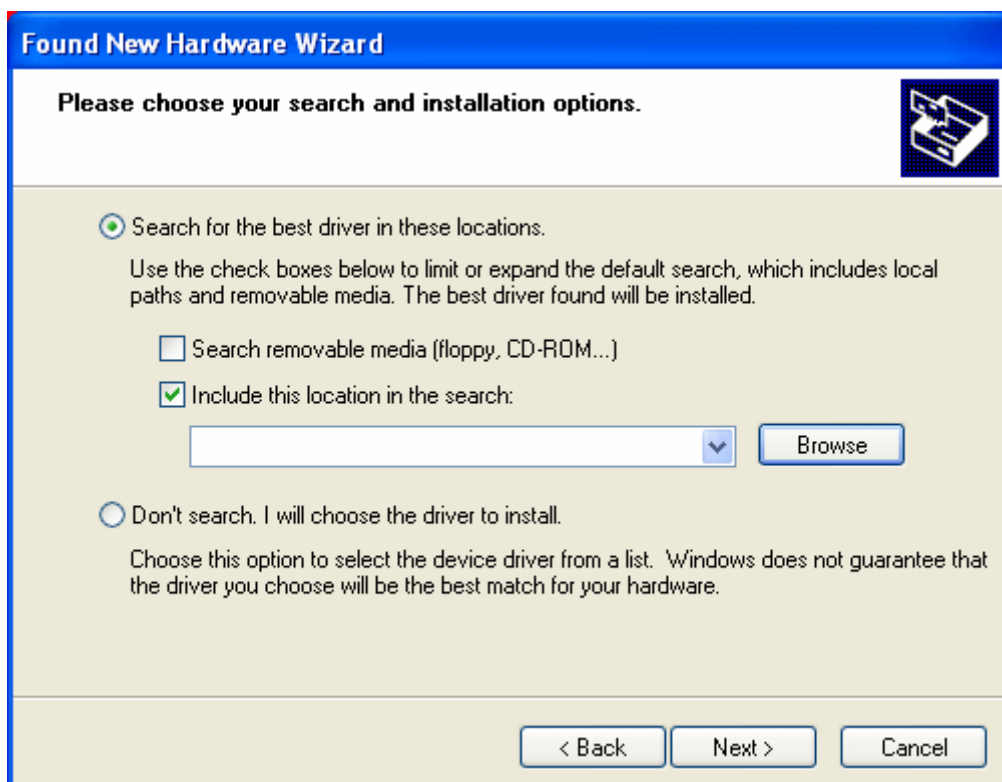
STEP #3.3

After the “found new hardware” box appears, the “found new hardware wizard” will start. You will be asked “what do you want the wizard to do? ” Select “install from a list or specific location (advanced)”.



STEP #3.4

Select “search for the best driver in these locations” and click “include this location in the search”. Input the path in STEP #3.1.



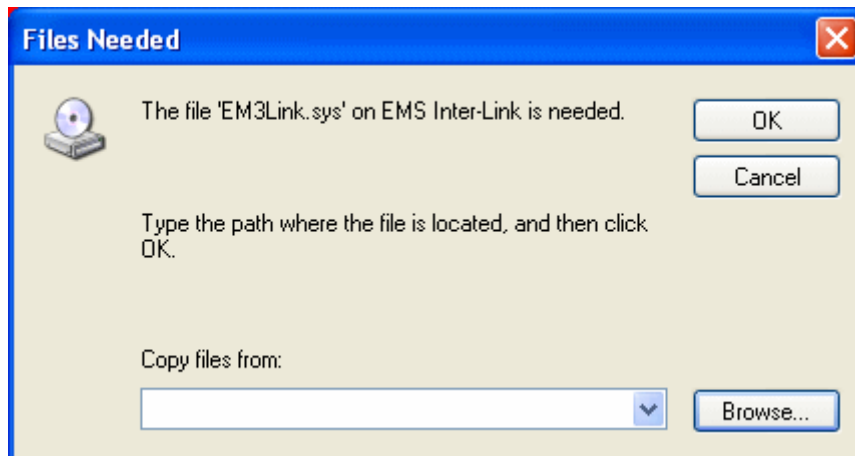
STEP #3.5

After you click the next button you should see a hardware installation window appear saying the drivers may not be compatible with Windows XP. The drivers do work so ignore this box and click “continue anyway”.



STEP #3.6

Windows XP may install the drivers on its own, but if not a “files needed” window will appear asking to find the file “EM3Link.sys”. Please input the path in STEP #3.1 and click “OK”, windows XP will install the driver successfully. You could find the a USB device called “EMS inter link cable” in the “device manager”. Please remember to reboot the computer after that.



4. Transfer Game Savers

The NDS™ Adaptor program is located at the path in STEP #3.1. Here is the program interface. After you have connected the adaptor to PC, it would show up the USB logo and cart volume. (see the figure below) The cart volume may differ from card to card, may not equal to 512k. You could then upload game saver from card to PC, or download game saver from PC to card.



Upload game saver from card

Click the button **“Back up (cart to PC)”**, it would then pop up a **“Save as”** window (see figure 4 below). Please select the location, input the file name and then click **“Save”** to back up game saver from card to PC.

Download game saver from PC

Click the button **“Download (PC to cart)”**, it would then pop up an **“Open”** window (see figure 5 below). Please select the file and then click **“Open”** to download game saver from PC to cart.

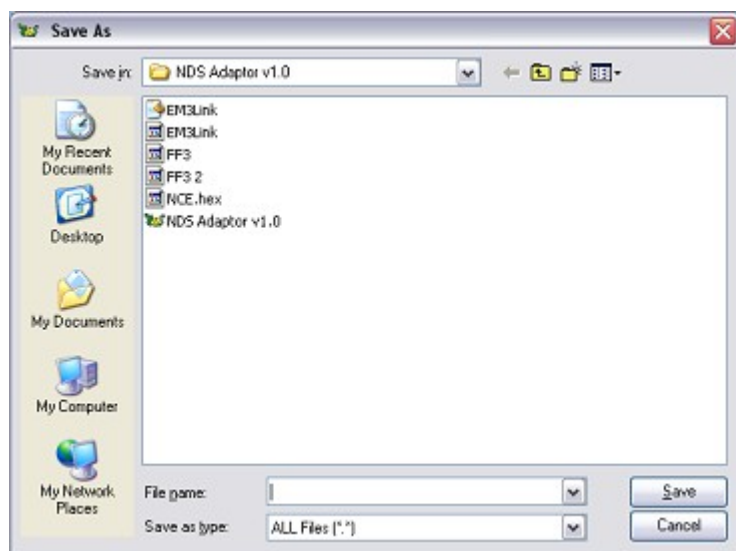


Figure 4

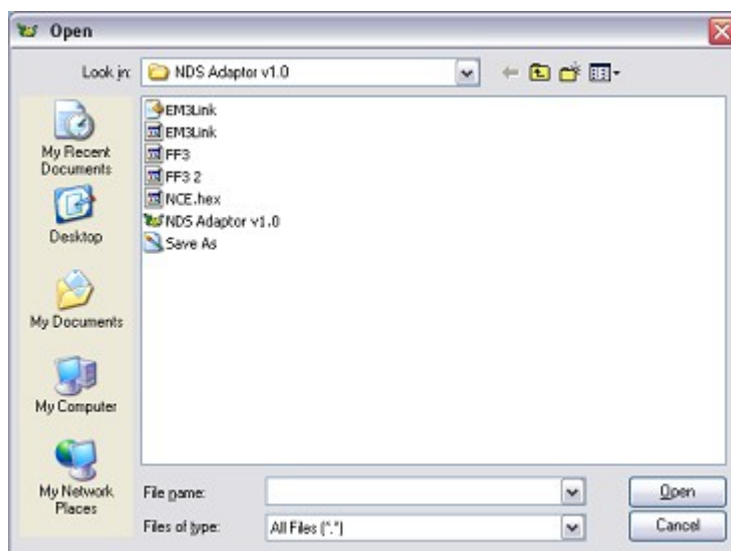


Figure 5

For any inquiry, please contact us by email : sales@hkems.com